



Sorting Guide

Depot Sorting Guide



To reflect the changes to the Service Agreement, approved by the BCMB on September 1, 2019, this sorting guide has been updated. The following pictures will demonstrate each sort included in Schedule A (Approved Beverage Container Counts, Sorts and Shipping Containers) of the Service Agreement.

This document may be updated to reflect new material streams or sorting practices as agreed to by industry stakeholders.

For more information, please contact the BCMB at (888) 424-7671 or visit our website at www.bcmb.ab.ca

ALUMINUM

Aluminum 0 – 1 Litre

- Container Code: 1006
- Standard Units: **2160** (180 dozen)
- Shipping Container: Mega Bag



Depot Sorting Guide

PET



The PET sort includes only clear and translucent blue-tint PET containers.

Note: Any PET container that is opaque/solid blue (light does not pass through/you cannot see through) should be sorted as Plastics (Other). All PET containers with a translucent blue tint (light passes through/you can see through the container) will be placed in the PET sort.

PET Over 1 Litre Clear & Blue Tint

- Container Code: 4003
- Standard Units: **360** (30 dozen)
- Shipping Container: Mega Bag



Depot Sorting Guide

Pet 0 – 1 Litre Clear & Blue Tint

- Container Code: 4006
- Standard Units: **1200** (100 dozen)
- Shipping Container: Mega Bag



Non alcoholic, non concentrate
drink mix

HDPE

The HDPE sort includes only Over 1L Natural HDPE. Please use Milk Jugs and Sunny D as a point of reference for determining if a container is HDPE Natural because these containers do not have any tint added.

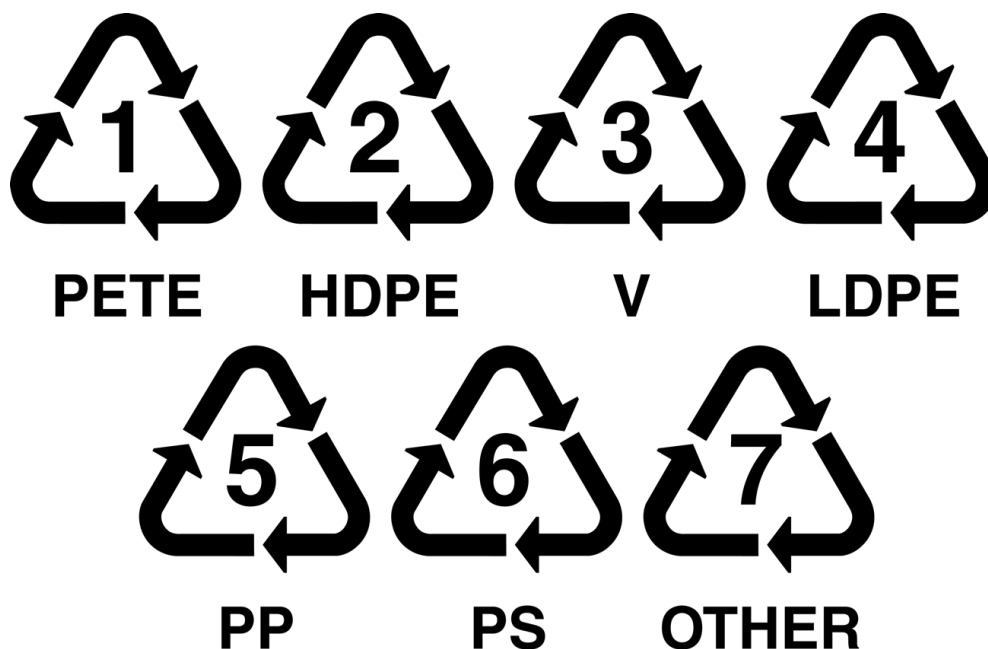
Note: White and Color HDPE Over 1L are included in the Plastics (Other) Over 1L sort.

HDPE Over 1 Litre (natural)

- Container code: 4303
- Standard Units: **240** (20 dozen)
- Shipping Container: Mega Bag



PLASTICS (OTHER) SORT



The Plastics (other) sort contains all 0-1L and Over 1L plastics, other than clear and translucent blue tint PET and Over 1L HDPE Natural. This sort is separated by size and includes the following materials:

Plastic (Other) 0 – 1 litre

- PET Color (#1)
- HDPE Natural (#2, 4)
- HDPE White and Color (#2, 4)
- Polypropylene (#5)
- Other Plastics (#3, 6, 7)

Plastics (Other) Over 1 litre

- PET color (#1)
- HDPE White & color (#2, 4)
- Polypropylene (#5)
- Other Plastics (#3, 6, 7)

Plastics (Other) Over 1 litre

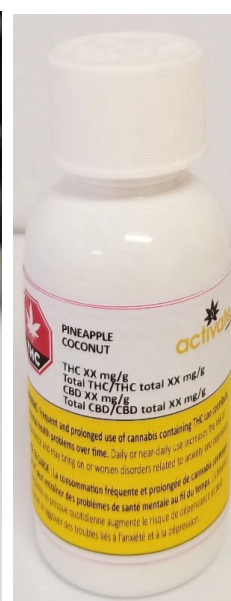
- Container Code: 4603
- Standard Units: **300** (25 dozen)
- Shipping Container: Mega Bag



Depot Sorting Guide

Plastics (Other) 0 – 1 litre

- Container Code: 4606
- Standard Units: **1800** (150 dozen)
- Shipping Container: Mega Bag



Glass

Glass Over 1 litre

- Container Code: 3003
- Standard Units: **420** (35 dozen)
- Shipping Container: Glass Bag



Depot Sorting Guide

Glass 0 – 1 litre

- Container Code: 3006
- Standard Units: **960** (80 dozen)
- Shipping Container: Glass Bag

•



Non alcohol, non concentrate
drink mix

Tetra Brik

Tetra Brik can easily be identified by the Tetra Brik symbol found on the bottom of most Tetra Brik containers. Tetra Brik containers can also be identified by the metallic foil that lines the inside the container.

Tetra Brik Over 1 litre

- Container Code: 5003
- Standard Units: **420** (35 dozen) or **60** (5 dozen)
- Shipping Container: **420** (35 dozen): Mega Bag
- Shipping Container: **60** (5 dozen): One-way bag



Depot Sorting Guide

Tetra Brik 0 – 1 litre

- Container Code: 5006
- Standard Units: **1440** (120 dozen)
- Shipping Container: Mega Bag



Gable Top

Gable Top over 1 litre

- Container Code: 6003
- Standard Units: **360** (30 dozen)
- Shipping Container: Mega Bag



Depot Sorting Guide

Gable Top 0 – 1 litre

- Container Code: 6006
- Standard Units: **900** (75 dozen)
- Shipping Container: Mega Bag



Bi-Metal

Bi-Metal over 1 litre

- Container Code: 2003
- Standard Units: **360** (30 dozen) or **36** (3 dozen)
- Shipping Container: **360** (30 dozen): Mega bag
- Shipping Container: **36** (3 dozen): One-way bag



Bi-Metal 0 – 1 litre

- Container Code: 2006
- Standard Units: **1500** (125 dozen) or **180** (15 dozen)
- Shipping Container: **1500** (125 dozen): Mega bag
- Shipping Container: **180** (15 dozen): One-way bag



Bag-in-a-box/Drink Pouch

Drink Pouches 0 – 1 litre

- Container Code: 7006
- Standard Units: **1200** (100 dozen)
- Shipping Container: One-Way Bag



Bag-in-a-Box/Drink Pouch Over 1 litre

- Container Code: 8001
- Standard Units: **120** (10 dozen) or **12** (1 dozen)
- Shipping Container: **120** (10 dozen): Mega bag
- Shipping Container: **12** (1 dozen): One-way bag

The bag in a box does not need to be sorted by size.

Note: both the bladder and the box need to be included when shipping bag-in-a-box to ABCRC.



Plastic One-Way Keg

- Container Code: 4023
- Standard Units: **36** (3 dozen)
- Shipping Container: Mega Bag

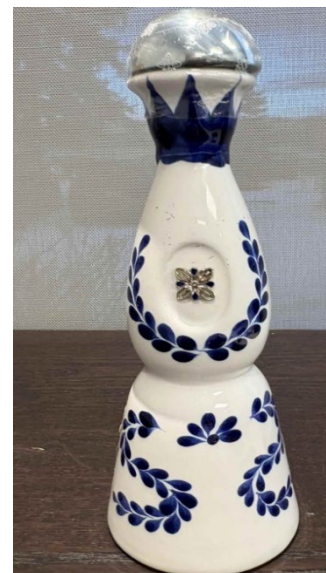
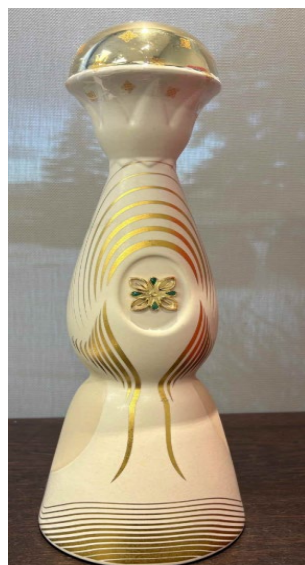
Note: This material stream includes a variety of Plastic One-Way Kegs, including types like Key Kegs, Petainers, Poly Kegs, etc. In some cases, a special tool is required to release all pressure from the keg before it can be broken down for shipping.



Ceramics

- Container Code: 3501
- Standard Units: **12** (1 dozen)
- Shipping Container: One-Way Bag

Please note that extra care needs to be taken when handling ceramic beverage containers as they are a significant contamination to the Glass stream and **MUST** be separated effectively from Glass.



Small Sleeve-in-a-box

Note: Both the plastic sleeve and the outer box need to be returned ABCRC using generic bag tags and one-way bags



Water Jugs

Note: One time use water jugs are registered with the BCMB and are to be accepted by Alberta Depots. These containers fall under **Plastics (Other) Over 1 litre**. These containers are typically made of thinner, more flexible plastic (PET).



Note: Refillable PET or Polycarbonate water jugs are registered with the BCMB but not to be accepted by Alberta Depots. These containers are typically made of thicker, rigid PET or Polycarbonate.

NOT ACCEPTED



**PLEASE RETURN
TO YOUR POINT
OF PURCHASE**

Alberta Depots **do not** accept these large, refillable water jugs. Contact information for the manufacturer can be found on the container.

Any further questions?

Please contact:
Canadian Bottled Water Association
info@cbwa.ca
cbwa.ca





SCAN ME



Cannabis Container Barcodes

Cannabis containers are registered with the BCMB using the 14-digit GTIN barcode following the (01). When searching the registration status of a container, please search using those parameters.

In this example, the UPC registered in the BCMB system would be 09501101530003 or the top barcode of the stacked barcodes.

